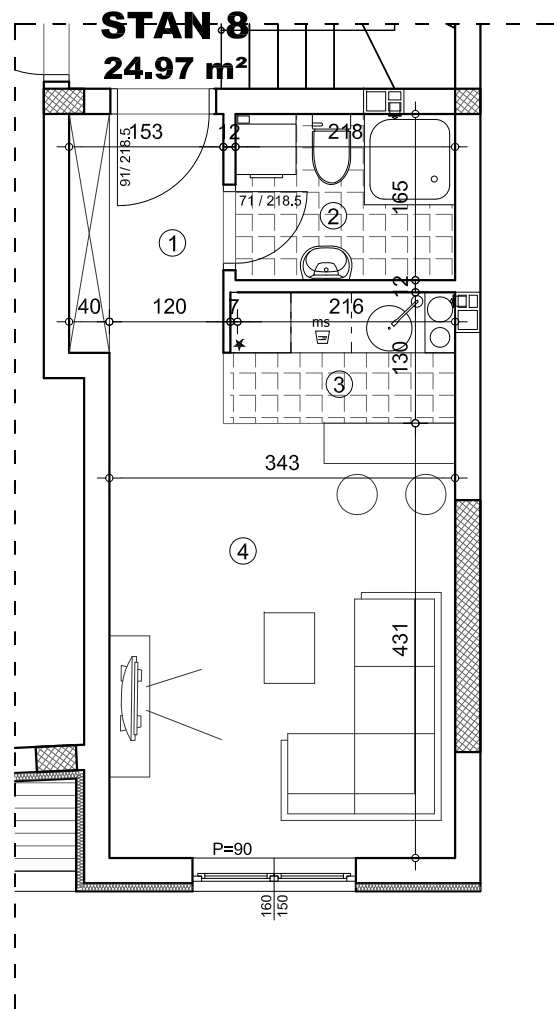


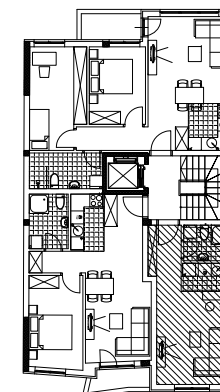
### OSNOVA STANA 1:75



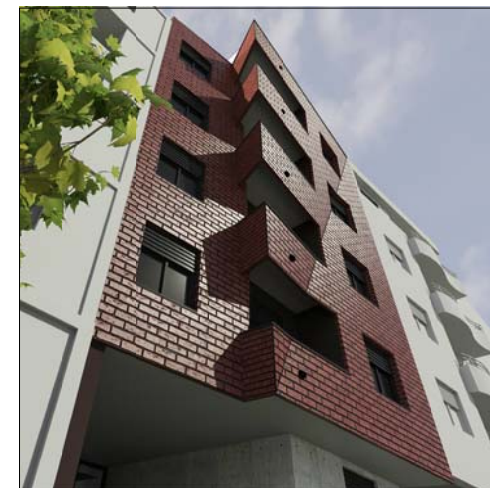
### STAN 8 - garsonjera

	pod	površina
<b>1 ULAZ/HODNIK</b>	parket	<b>3.63 m<sup>2</sup></b>
<b>2 KUPATILO</b>	ker.pl.	<b>3.59 m<sup>2</sup></b>
<b>3 KUHINJA</b>	ker.pl.	<b>2.94 m<sup>2</sup></b>
<b>4 DNEVNA SOBA</b>	parket	<b>15.58 m<sup>2</sup></b>
<b>UKUPNO:</b>		<b>25.74 m<sup>2</sup></b>
<b>UKUPNO REDUKOVANO -3%:</b>		<b>24.97 m<sup>2</sup></b>

### OSNOVA 2.SP RATA



ulica



ulica Dostojevskog 12

2.SP RAT/STAN 8